

CROPS July Newsletter

List for PSI CROPS Student/Postdoc Organization <CROPS-PSI@LISTSERV.UNL.EDU>

on behalf of

Crops PSI Group <cropspsi@UNL.EDU>

Fri 7/17/2020 11:04 AM

To: CROPS-PSI@LISTSERV.UNL.EDU <CROPS-PSI@LISTSERV.UNL.EDU>



Collective Research Organization of Plant Scientists
- a student and postdoc society sponsored by UNL PSI

Happy July, CROPS!

Well it has been a little over a month back into the relaxations of the level four shutdown, and while many things are taking on new forms, we are sure all of you are glad to be back in the lab to some extent. And if you are still working from home, we hope that our **Summer Webinar Series** has been a platform for you to feel more socially involved while we continue to physically distance.

We would like to thank everyone who attended the first half of our webinars and helped to make it a huge success! We are so excited to be including speakers from Kansas State University, University of Missouri-Columbia, Iowa State University, and South Dakota State University. Even in these hard times, we are only a Zoom square away!

Also, we want our future newsletters to be as uplifting as possible, so we are creating a section where **YOU can submit lab job postings, personal/professional highlights, and even thesis defense announcements!** We want to stay as connected with each other during this unprecedented time; just because we are physically distant, does not mean we need to remain socially uninvolved in each others' lives! Email us at CropsPSI@unl.edu to submit! (CROPS reserves the right to not post everything we receive as a submission)

For more information, stay tuned via [email](#), [website](#), [Twitter](#), and [Instagram](#)!

Don't forget to check out our **upcoming events, job announcements, and lab highlight!**

-The CROPS 2019/20 Board

July Newsletter Contents!

- Guidelines for returning to work
- PSI Heuermann Fellowship
- Get involved in CROPS!
- CROPS Summer Webinar Series: Schedule and Update
- 2020 Virtual NC Mini-Land Grant Virtual Meeting
- Lab Highlight: "The Jeff Mower Lab"
- AAAS Science and Technology Policy Fellowships
- SciComm Virtual Conference
- Science Writing Help Desk with Dr. Christine Booth
- PSI Faculty Courses
- UNL Rec Center and Dairy Store updates: OPEN for the Summer!

Guidelines for returning to work at UNL

If you are on campus, you **MUST** follow the health and safety measures and guidelines of being on campus. These guidelines were passed on to us by UNL and are as follows:

- Wearing a face mask covering in ALL public places, labs and shared offices
- Make sure to wash your hands thoroughly and frequently or use hand sanitizer frequently
- Maintain a 6-foot distance between people at all times.

For more information about UNL's guidelines and what to expect in the Fall semester for researchers and instructors, click [here!](#)

Get involved in CROPS!

We have created a [Google form](#) that will remain open in our newsletters and will be a way for the CROPS community to offer speaker suggestions, get involved with CROPS, and give us general feedback! This form can be submitted more than once, so don't feel you need to wait to have all the information we are asking about to answer!

PSI Heuermann Fellowship

The Heuermann UNL Plant Science Fellowship was established in 2020 with a generous donation from B. Keith and Norma Heuermann. The fellowship recognizes doctoral program students for excellence in plant science research and their potential for accomplishments in the field. Recipients of the Heuermann UNL Plant Science Fellowship will receive a \$2,500 stipend that will be disbursed in two \$1,250 installments, one in August 2020 and one in January 2021. The Heuermann UNL Plant Science Fellowship is non-renewable and does not entail any service requirements. **Applications are due by July 31st 2020!**

Eligibility Criteria:

- Open to any student conducting plant science-related research
- Full-time PhD student status
- Cumulative GPA of 3.5 or greater
- Graduation date after May 2021

For a full list of application materials and to begin the online application process, click [here!](#)

CROPS Summer Webinar Series!
Tuesdays at 11 am beginning June 2nd - August 18th!

Join CROPS weekly via Zoom on Tuesdays at 11 am for our Summer Webinar Series!

We also want to extend our thanks to the **Center for Plant Science Innovation** and the **Agricultural Research Division** for funding this webinar series!

We couldn't do this without you!

See the full schedule and RSVP here!

Our summer webinar series is designed to provide our CROPS community the opportunity to present their research in light of the many scientific meetings that have been canceled due to COVID-19. We know that for many of you, having the opportunity to travel and meet others in your field is an invaluable part of your program, so we want to give you the chance to take part in our version of a conference!

July 21

Dr. Prince Zogli, Louis Lab, University of Nebraska-Lincoln

“Greenbug (*Schizaphis graminum*) Herbivory significantly alters Switchgrass proteome”

Sidharth Sen, Joshi Lab, University of Missouri-Columbia

“A multi-omics discriminatory analysis approach to identify drought-related signatures in maize

nodal roots”

July 28

Dr. Lise Pingault, Louis Lab, University of Nebraska-Lincoln

“Maize Transcriptional Responses to Corn Leaf Aphid Infestation”

Shannon K. King, University of Missouri-Columbia

“Transcriptomic Approaches to Uncover the Molecular Mechanisms of Maize Nodal Root Growth during Drought in the Field”

August 4

Dr. Jithesh Vijayan, Roston Lab, University of Nebraska-Lincoln

“Control of Fatty Acid Synthesis by Target of Rapamycin Signaling under Nitrogen Limitation in Microalga *Chlorella sorokiniana* and *Chlamydomonas reinhardtii*”

August 11

Dr. Rachel A. Koch, Herr Lab, University of Nebraska-Lincoln

“OG Farmers: The Biology of an Insect Fungal Crop”

August 18

Yu Song, Welti Lab, Kansas State University

“Lipidomics-based GWAS study on *Arabidopsis thaliana* reveals genes related to lipid metabolism and freezing tolerance”

Bailey McNichol, Russo Lab, University of Nebraska-Lincoln

“Linkages between geographic ranges and local distributions of woody species in a biogeographically unique plant community”

Dr. Edgar Cahoon, PSI Director, University of Nebraska Lincoln

Webinar concluding remarks and announcement of the selected speaker prizes!

Keep an eye on our [twitter](#) and email for updates!

2020 Virtual NC Mini-Land Grant Virtual Meeting!
July 27th and 28th

Register [here](#) for the Zoom information!

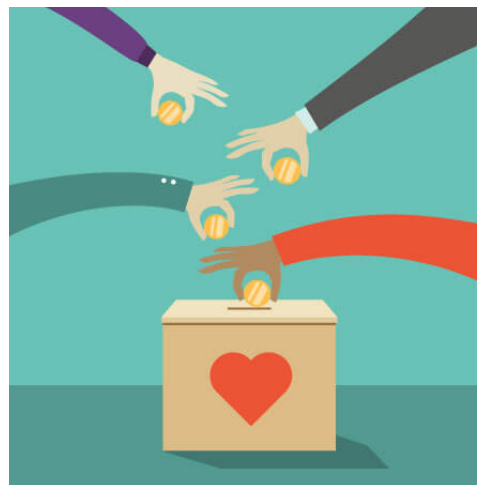
The Association of Public and Land Grant Universities (APLU) includes a Council on Agricultural Research Extension and Teaching (CARET). CARET delegates are citizens (e.g., farmers, ranchers, agribusiness professionals) appointed by the Land Grant Universities in their state to

serve as stakeholder advocates for the mission of the land grant system. CARET delegates participate in the Annual APLU Meeting and a Nation CARET Meeting during which they join university administrators in "Hill Visits" to the state's U.S. Congressional offices. Each summer, the CARET members from the North Central Region (North Dakota, South Dakota, Nebraska, Kansas, Missouri, Iowa, Minnesota, Wisconsin, Illinois, Indiana, Ohio, and Michigan) meet for a Mini-Land Grant meeting hosted by one of the NC institutions. This year the Mini-Land Grant is hosted by the University of Nebraska, and will be offered in a virtual format

The CROPS officers will be taking part in this virtual meeting via a panel on "Innovation in Graduate Education - Preparing for Diverse Career Paths" from 2:00-3:30pm CDT.

Check out the full schedule [here](#) on our website!

Donate to CROPS!



Like what CROPS has been doing?

Want to help us put on even better events in the future?

We would love you to donate [here](#) to our UNL Foundation account to help us provide the most effective workshops and continue to bring awesome speakers to UNL!

The CROPS Board Thanks You!

July Lab Highlight

This month we are highlighting the Mower Lab!



The Mower Lab

The Mower lab uses tools of comparative genomics, molecular biology, and transgenics to understand the evolution of plant genomic structure, function, and content. We have sequenced and compared hundreds of mitochondrial and plastid genomes from diverse plants and algae and are collaborating on nuclear genome projects for some horticultural and agronomic plants. One of the newest projects in the Mower lab is to assess the lability of gene function in diverse plant species over about a billion years of evolution. We are using transgenics to assess whether homologous genes in flowering plants, ferns, and algae tend to maintain or diversify their function over time.

For more information visit Dr. Mower's website [here!](#)

AAAS Science and Technology Policy Fellowships

Deadline to apply is November 1 2020!

Seven fellows on Capitol Hill ushered in the AAAS Science & Technology Policy Fellowships (STPF) program back in 1973. Today, AAAS places more than 250 fellows each year across all branches of federal government to learn first-hand about policymaking and use their knowledge and skills to address today's most pressing societal challenges.

For more information and to apply online, visit the AAAS website [here!](#)

SciComm Online Webinar!

August 14-16, 2020

Register [here](#) through August 1st!

SciComm is a conference dedicated to understanding and promoting effective communication of science to diverse audiences – including students of all levels as well as the general public – across all venues with the following goals:

- 1) Train scientists, educators, journalists and the public in effective science communication
- 2) Disseminate cutting-edge research, tools, evaluation instruments, programs, and activities for science learning and evaluation inside and outside of classrooms.
- 3) Forge new connections between university instructors, discipline-based education researchers, K-12 teachers, informal and formal science learning sites (e.g. museums, libraries), science learning researchers and evaluators, and science disseminators (e.g. science writers, filmmakers).
- 4) Engage with the public, policymakers, and people who use science communication in a diversity of careers.
- 5) Provide opportunities for practitioners of science communication to implement communication strategies and receive critical feedback.

Scientific Writing Help Desk: "Sit-down-and-write"



Scientific Writing Help Desk
Science writing done *right!*



Friday's from 10:00am-Noon

Do you:

- Need to get started writing?
- Need to finish a project and could benefit from having a dedicated time to write?
- Would like to try a process that will stop you from getting distracted by details when writing?
- Need help managing your time when writing?
- Could benefit from discussing your writing concerns with others or get new ideas?
- Would like to meet other science graduate student?

Sit-down-and-write is a two-hour meeting of STEM graduate students working on a variety of writing projects. The meeting is hosted by the Scientific Writing Help Desk in the Department of Agronomy and Horticulture and is led by Dr. Christine Booth. We start each meeting by catching up with each other and welcoming new members, then we transition into cycles of writing and breaks – we try to write for 25-minutes at a time, followed by a 5-minute break.

Email Dr. Christine Booth at cbooth2@unl.edu for more info!
Hurry, as sessions are capped at 12 participants!

UNL Rec Centers are OPEN for the Summer!

Starting June 15th, Rec Centers will be open!

With limited hours and amenities, the Rec Centers will be back up and running starting June 15th. If you had registered for classes in the Spring 2020 semester, fees will be waived for the summer. If you were not registered for the spring semester but are for the summer, registration can be purchased for \$53. For more info visit the [Rec Center website!](#)

Dairy Store is back in business!



UNL Dairy Store
about a week ago



Have you been CRAVING Dairy Store ice cream during the shutdown??

Well they are back! But check out their post (left) for their COVID-19 updates.

For more info, visit their website [here!](#)

Hello everyone! We are open! However, the front door of our building (nearest to the parking spots) will remain locked due to COVID-19. We do have another door that is OPEN and it is located on the West side of the building, close to the green space on East Campus. If you need help finding the door, feel free to give us a call at 402-472-2828 and we will help you out! Thanks!

Fall 2020 PSI Faculty Courses

CROPS would like to offer our PSI faculty a space to advertise their Fall 2020 classes to our community! We will keep this list here throughout the summer and continue to update it as we receive more submissions! Each course will be linked to a PDF on our [website](#)!

Jeff Mower: BIOS 429/829 Phylogenetic Biology (ACE 10)

Job Opportunities, GSA Due Dates, and Postdoc Info!

Are you a new postdoc at UNL? Not sure what all you need to need, or struggling to find housing? Check out this [link](#) to Grad Studies for all that info and more! Also, UNL offers a travel grant for postdocs! Check of this [link](#) for more info!



Interested in teaching? Check out the UNL Center for Research Innovation, Teaching and Learning (CIRTL) [here](#) for workshops, seminars and certifications! CROPS also has a [link](#) on our website for more info!

COVID-19 Updates

As we continue to learn more about the COVID-19 corona virus everyday, please keep yourself informed at covid19.unl.edu! Also keep in mind that conferences and scheduled seminars are subject to change as travel enforcements are put into place to limit the spread of the virus.

For information from The Office of Graduate Studies check **HERE** !

Please email covid19@unl.edu if you have any questions!

Something to Share?



Like our newsletter?



Have suggestions for future segments or features?

Just want to say hey?

Contact Us!

UNL CROPS
1901 Vine Street, Lincoln, NE 68588
[Unsubscribe](#)

|