

**Subject:** CROPS February Newsletter 2022

**Date:** Tuesday, February 1, 2022 at 12:28:12 PM Central Standard Time

**From:** List for PSI CROPS Student/Postdoc Organization on behalf of Crops PSI Group

**To:** CROPS-PSI@LISTSERV.UNL.EDU



Collective Research Organization of Plant Scientists  
- a student and postdoc society sponsored by UNL PSI

Happy February CROPS!

As a new semester begins and we look forward to promoting more social and scientific events for our community, the Board would like to thank you, our donors and benefactors, for helping us to make all this possible! Your donations mean the world to us. Because of your support, we can continue to provide graduate students and postdocs of PSI with opportunities to improve skills and create networking opportunities.

And we would like to hear from you! Please let us know your feedback on last semester's events and suggestions on how we can improve your experience as part of CROPS. [Email us](#) or [tweet us](#) with your feedback!

On behalf of everyone that participates in our activities, thank you again for your donations.

Sincerely,

The CROPS 2021/22 Board

If you would like to donate to our Foundation Account, [click here](#). And for more information about the use of these resources, please do not hesitate to [contact us](#).



Our next CROPS Seminar speaker is **Dr. Ian Willick**. Ian is currently transitioning to the role of a Research Scientist at Agriculture and Agri-food Canada. He has done postdocs under Karin Tanino, with whom he also completed his Ph.D., at the University of Saskatoon, Canada, and David Lowry at Michigan State University. Ian's work has and will continue to center around understanding the mechanisms of low-temperature tolerance in cereal crops.



To RSVP for the webinar, [Click Here!](#)



Congrats to former CROPS President and Treasurer, Dr. Lise Pingault as the recipient of the **2021 UNL Outstanding Postdoc Award!** We are so proud of you, Lise, and can't wait to see all the great work you have in store to share with us! To read more about Lise, check out her page [here!](#)

Check out our new CROPS web page with [resources for professional development!](#) And please reach out if you have other resources you'd like to make available - we'd be happy to post them!

Also, we want our future newsletters to be as uplifting as possible, so we are creating a section where **YOU can submit lab job postings, personal/professional highlights, and even thesis defense announcements!** We want to stay as connected with each other during this unprecedented time; just because we are physically distant, does not mean we need to remain socially uninvolved in each others' lives! Email us at [CropsPSI@unl.edu](mailto:CropsPSI@unl.edu) to submit! (CROPS reserves the right to not post everything we receive as a submission)

For more information, stay tuned via [email](#), [website](#), and [Twitter!](#)

Don't forget to check out our upcoming events, job announcements, and lab highlight!

-The CROPS 2021/22 Board

---

## February Newsletter Contents

---

- [CROPS Travel Grant 2022](#)
  - [Upcoming CROPS/PSI Events and UNL Seminars](#)
  - [Special Highlight: Leann Galusha \(Retired on Jan 6th, 2022\)](#)
  - [New Hire Highlight: Dr. Valdimir Torres-Rodriguez](#)
  - [Upcoming seminars/webinars/conferences in 2022](#)
  - [Job Board Advertisements \(courtesy of Plant-postdoc slack\)](#)
  - [Donate to CROPS](#)
- 

### CROPS 2022 Travel Grant!

---

Applications to the 2022 CROPS Travel Grant are officially being accepted! We have a few changes this year, so please read on to make sure you have all the right info!

To apply, click [here](#)!

1) There will be TWO application periods for the travel grant. **Jan 18th - Feb 18th, and Feb 19th - May 13th.** By having two sessions, we can allow for those attending conferences earlier in the year to have funds by the first week of March and not have to pay out of pocket. Applications received after Feb 18th will automatically be considered for the second application period.

***Note: You only need to apply once, but if you applied for the first application period and were not awarded, you may apply again for consideration in the second.***

2) Previously, CROPS worked with Lisa Vonfeldt to approve all funding for travel, but this year the board will review all funding before the judges receive your application. You will still fill out the same form and attach it with your application. This will ONLY be to ensure that the travel/expenses can be funded within the stipulations of the grant.

Incomplete applications **will not** be accepted.

If you have any questions, please contact us at [CropsPSI@unl.edu](mailto:CropsPSI@unl.edu)

---

### Upcoming PSI/CROPS Events and UNL Seminars

---

## CROPS Seminar

**February 22th, 2:00 pm, on Zoom**

**Dr. Ian Willick**

Dr. Willick will be talking about his research on cold and freezing tolerance of perennial and annual crops from a physiological perspective. Specifically, Ian will be focusing on mechanisms of low-temperature tolerance of winter cereals. He will also talk briefly about the work he plans to accomplish at his new position as a Research Scientist in Agriculture and Agri-foods Canada.

Followed by ~30-45 minutes of career-based discussion

**RSVP [here](#) for the zoom link!**

---

## February PSI Meeting

**Thursday, February 17th at 4:30 pm CST on Zoom**

***Zoom information will be released at a later time***

### **Ge Lab:**

The [Ge lab](#) is focused on plant phenotyping, image analysis, precision agriculture, and spatial analysis.

### **Holding Lab:**

The [Holding lab](#) is focused on functional genomics studies of endosperm development in cereals and applied methods for improving kernel quality.

---

## Agronomy and Horticulture Seminars:

**Fridays, 3:30 pm, Keim Hall 150 or [online](#)**

### Feb 4th

Collaborative Efforts to Diversify Nebraska Cropping Systems

**Andrea Basche, Assistant Professor of Cropping Systems, Department of Agronomy and Horticulture, University of Nebraska-Lincoln**

### Feb 11th

Climate-smart Agriculture: Engaging One Health, Insects, Food and Water Security

**Georgina Bingham, Research Associate Professor and Daugherty Water for Food Institute Faculty Fellow, Department of Entomology, University of Nebraska-Lincoln**

### Feb 18th

From Discovery to Application in Ag Biotech: Lessons Learned Over 14+ Years in Industry

**Jason Nichols, Principal Scientist, Syngenta Crop Protection, LLC**

---

## Complex Biosystems:

Thursdays, 4:00 pm, Beadle N176

Feb 3rd

Dianna Morris and Aimee Kessell

Feb 10th

Sarah Johnson-Lucas and Yu Shi

Feb 24th

Hongyu Jin and Fangyi Li

---

### Special Highlight: Leann Galusha (Retired in January, 2022)

---



After 20 years of devoted service, Leann Galusha retired from  
The University of Nebraska on January 6, 2022.

Leann leaves a mark at UNL as her skills, willingness to always go the extra mile, and passion  
for serving others will be hard to replace.

Leann's commitment to The University, faculty, staff, and students  
was on constant display by her actions.

---

### PSI New Hire Highlight

**Dr. Vladimir Torres-Rodriguez**

*(Postdoc in the Schnable Lab)*





Vladimir earned his Ph.D. in plant biotechnology at [Langebio-CINVESTAV](#) in México. During that time he focused his research on understanding how nitrogen and phosphorus, two of the main nutrients in the soils, interact at a molecular level; to this end, he used techniques like RNA-seq, CRISPR editing, and manual measurements of root and shoot traits of maize seedlings; Parallel to these main projects, he also had been involved in fieldwork sowing, making crosses, advancing populations and phenotyping traits of interest in various fields per year.

He claims that one of the hardest parts of these processes was the energy and time spent taking manual measurements and that motivated him to explore better ways not only to accelerate this process but also to collect more accurate measurements. He finds in our university and I quote "a unique opportunity to develop and learn ideas regarding this goal".

Vladimir is doing his postdoctoral research under the supervision of Dr. Schnable, we believe he find the right place to keep pursuing his academic goals! In the Schnable lab, he is analyzing maize and sorghum traits and linking those phenotypes to genomic regions to gain knowledge that allows us to develop better lines for the future.

As for hobbies he likes to bike, watch movies/series/sports and play video games, he also loves his dogs (Argos and Mendel, pictured above). If you want to know more about him, talk about science or a random topic do not hesitate to reach him out via Twitter ([@vla\\_torres](#)).

---

## Information for Upcoming Seminar/Webinar/Conferences in 2022

---

## ASPB Member Only Virtual Networking Event

February 17, 2022, at 2:30 PM CST

To register for this event, go to the ASPB [Member Portal](#) and sign in with your username. Once logged in, go to Events in the top menu and click on the ASPB Member Only Networking Event icon. You will receive the event link a few days before the event.

---

## Plant Physiology Webinar:

Celebrating the February 2022 Focus Issue on The Plant Cell Atlas

February 10, 2022, at 10:00 AM CST

Join us for a special webinar organized by the Focus Issue editors. Register [HERE](#).

**Hilde Nelissen:** Spatial transcriptomics of the maize shoot apex: from single cell to leaf growth

**Daniel Kierzkowski:** Live-Imaging provides an atlas of cellular growth dynamics in stamen

**Jenn Brophy:** Toward synthetic plant development

---

## PhytochemTalks February Webinars

Sign up [HERE](#).

**February 11, 2022, 11:00 AM CST**

Christine Diepenbrock: “Genetics of carotenoids, kernel color, and vitamin E in maize grain”

**February 18, 2022, 11:00 AM CST**

Benjamin Lichman: “Unraveling Daphniphyllum alkaloid biosynthesis using mass spectrometry”

---

## ASPB 2022 Abstract Submissions are Open!

Deadline for submission for talk consideration: **March 11th, 2022, 11:59 PM EST**

Submitting an abstract for Plant Biology 2022, the joint meeting of the American Society of Plant Biologists and the Canadian Society of Plant Biologists (CSPB/SCBV), can open the door to broad interest in your work among plant scientists. The 30 concurrent symposia for which we select speakers are highly visible, and participating as a speaker can enhance your opportunities to establish new connections at the conference. Click [here](#) for more info!

ASPB also has opportunities to apply for awards for scientists at any stage of their career! If you would like to apply for want to read more, click [here](#) for more info!

---

---

## New Summer and Fall 2022 Course

CROPS would like to offer our PSI faculty a space to advertise their **Summer and Fall of 2022** classes to our community! We will keep this list here throughout the **Summer and Fall of 2021** and continue to update it as we receive more submissions!

---

## Job Opportunities!

---

### Syngenta Now Hiring!

Syngenta has openings for 2 Ph.D. level crop transformation scientists open at their North Carolina Research Triangle Park location! Links for [listing 1](#) and [listing 2](#) are hyperlinked.

Syngenta also has other openings for plant biologists, biochemists, geneticists, genomic data scientists. The position descriptions can be found [here!](#)

In collaboration with [Plant-Postdoc Slack](#) group, we are working together to share new job openings in both academia and industry. Please click [here](#) to get the information.



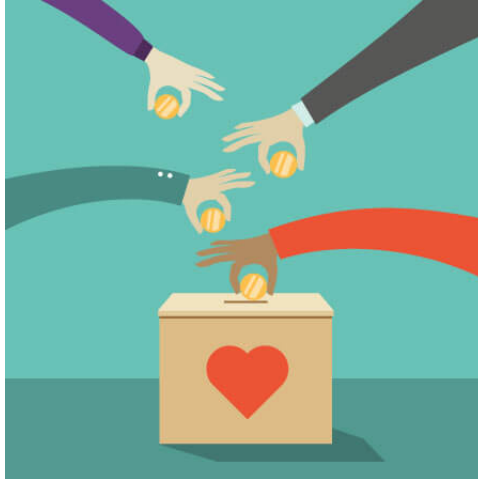
Are you a new postdoc at UNL? Not sure what all you need to need, or struggling to find housing? Check out this [link](#) to Grad Studies for all that info and more! Also, UNL offers a travel grant for postdocs! Check of this [link](#) for more info!

Interested in teaching? Check out the UNL Center for Research Innovation, Teaching and Learning (CIRTL) [here](#) for workshops, seminars and certifications! CROPS also has a [link](#) on our website for more info!





## Donate to CROPS!



Like what CROPS has been doing?

Want to help us put on even better events in the future?

We would love you to donate [here](#) to our UNL Foundation account to help us provide the most effective workshops and continue to bring awesome speakers to UNL!

The CROPS Board Thanks You!

---

## Something to Share?

Like our newsletter?

Have suggestions for future segments or features?

Just want to say hey?

### Contact Us!

Website

Email

Twitter

DONATE!



UNL CROPS

1901 Vine Street, Lincoln, NE 68588

[Unsubscribe](#)