

CROPS May Newsletter

List for PSI CROPS Student/Postdoc Organization <CROPS-PSI@LISTSERV.UNL.EDU>

on behalf of

Crops PSI Group <cropspsi@UNL.EDU>

Tue 5/12/2020 1:27 PM

To: CROPS-PSI@LISTSERV.UNL.EDU <CROPS-PSI@LISTSERV.UNL.EDU>



Collective Research Organization of Plant Scientists

- a student and postdoc society sponsored by UNL PSI

Hello and Happy Summer!

Well, the semester that seemed to last a lifetime has finally come to an end. And while the majority of us will continue to work from home this month, June holds the prospects of returning to the University and getting back to our benches.

However, with the likelihood that we will still be social distancing, CROPS is planning a **Summer Webinar Series** that will begin in June. We hope this will enable our grad students and post docs to feel that even if they were unable to attend an in-person conference, that their efforts for creating talks to showcase their work was not in vein. Keep reading below for more info!

Also, we want our future newsletters to be as uplifting as possible, so we are creating a section where **YOU can submit lab job postings, personal/professional highlights and even thesis defense announcements!** We want to stay as connected with each other during this unprecedented time; just because we are physically distant, does not mean we need to remain socially uninvolved in each others's lives! Email us at CropsPSI@unl.edu to submit! (CROPS reserves the right to not post everything we receive as a submission)

For more information, stay tuned via [email](#), [website](#), [Twitter](#), and [Instagram](#)!

Don't forget to check out our **upcoming events**, **job announcements**, and **lab highlight!**

-The CROPS 2019/20 Board

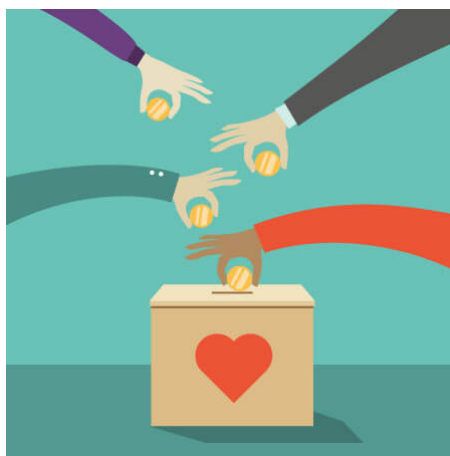
Continued thanks to our essential employees!



CROPS wants to take this time to thank all our essential employees at UNL that have put their lives on the line to keep our research up and running! Even though we are on Level 4 shutdown, these outstanding employees are keeping UNL not only clean and safe, but also keeping research going by maintaining greenhouses, fields, insect colonies, cell cultures and staffing the UNL Centers. You are all amazing and we appreciate each of you!

Check out UNL's own "Unsung Hero" Samantha Link (Beadle Greenhouse Manager) who was featured in [ASPB's monthly newsletter](#) for her outstanding and tireless work!

Donate to CROPS!



Like what CROPS has been doing?
Want to help us put on even better events in the future?
We would love you to donate [here](#) to our UNL Foundation account to help us provide the most effective workshops and continue to bring awesome speakers to UNL !

The CROPS Board Thanks You!

CROPS Summer Webinar Series! **Tuesday's at 11am beginning June 2nd - August 25th!**

Join CROPS weekly via Zoom on Tuesdays at 11am for our Summer Webinar Series!

Our summer webinar series is designed to provide our CROPS community the opportunity to present their research in light of the many scientific meetings that have been cancelled due to

COVID-19. We know that for many of you, having the opportunity to travel and meet others in your field is an invaluable part of your program, so we want to give you the chance take part in our version of a conference!

We have **13 speakers from UNL** who are excited to give 20-minute presentations followed by 5-10 minutes of Q&A. Once we put the finishing touches on the plans, the tentative schedule will be posted on our website!

Keep an eye on our [twitter](#) and email for updates!

Upcoming PSI Events!

PSI Zoom Research Group Meeting

May 21st 4:30pm CST

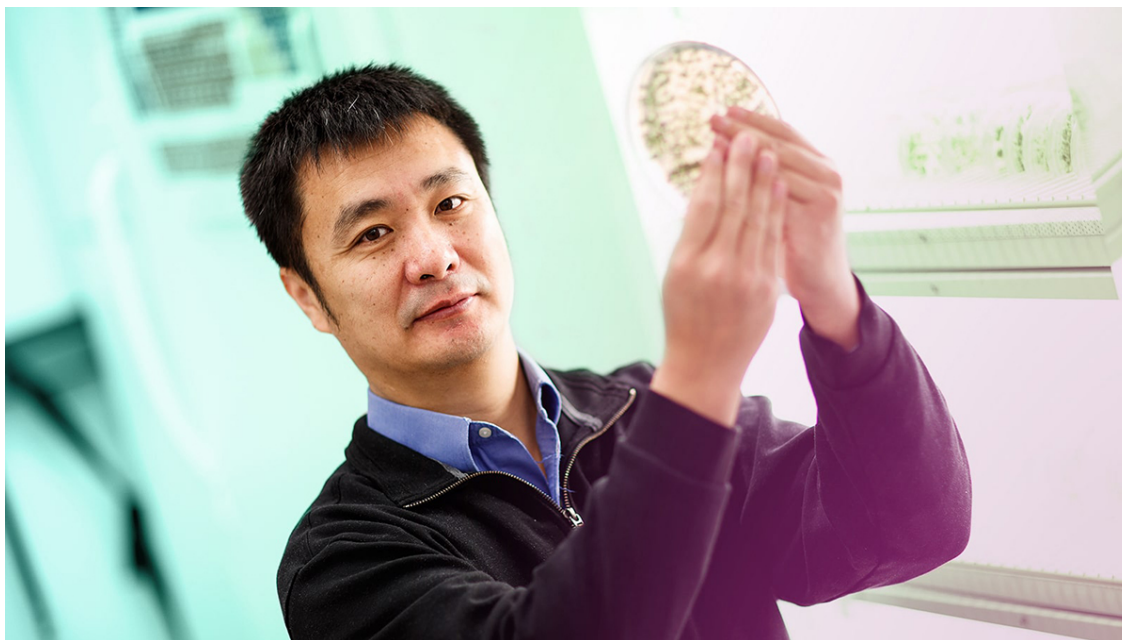
Work-in-progress talks from the labs of Dr. Schachtman and Dr. Herr will be given.

If you need the Zoom link, please contact [Lisa Vonfeldt](#) or [Ed Cahoon](#)!

Schachtman and Herr Labs

May Lab Highlights

This month we are highlighting Dr. Bin Yu!



Dr. Bin Yu

The long-term research interest in the Yu Lab is to understand the molecular mechanisms underlying small RNA metabolism and function. Small RNAs, including microRNAs (miRNAs) and small interfering RNAs (siRNAs), are 20-to-24-nucleotide (nt) RNAs that function as sequence-specific regulators of gene expression at both transcriptional and post-transcriptional levels in eukaryotes. These small RNAs are involved in numerous cellular processes, including development, differentiation, proliferation, apoptosis, stress responses and epigenetic modifications. Researchers currently employ a combination of genetic, biochemical, cell

biological, and genomic approaches to identify and characterize components involved in small RNA metabolism and activities in *Arabidopsis thaliana* and crops such as soybean, maize, rice and tomato.

For more information visit Dr. Yu's PSI website [here!](#)



Congrats to Dr. Daniel Schachtman! Newly Named George Holmes Professor of Ag and Hort

George Holmes Professor of agronomy and horticulture, is internationally renowned for his research in plant mineral transport, nutrient signaling, abiotic stress tolerance and crop root-soil microbiome interactions. He has published more than 100 peer-reviewed papers and has been cited more than 15,000 times. He currently manages more than \$15 million in extramural grants, the most notable being a \$14.5 million grant from the U.S. Department of Energy. He also serves as director of the Nebraska Center for Biotechnology, which provides research core facility services to the NU scientific community and external academic and industrial scientists.

Fall 2020 PSI Faculty Courses

CROPS would like to offer our PSI faculty a space to advertise their Fall 2020 classes to our community! We will keep this list here throughout the summer and continue to update it as we receive more submissions! Each course will be linked to a PDF on our [website!](#)

Jeff Mower: BIOS 429/829 [Phylogenetic Biology](#) (ACE 10)

"Plantae Presents" Online Webinar Series



Plantae Webinars are produced by ASPB for the plant science community. Attendees can participate in live virtual seminars or access them on-demand in the Plantae community. Registration is free and opens to ASPB members exclusively for 24 hours before opening to the general plant science community
For more info visit Plantae [here!](#)

Summer Online Courses with CIRTL and the Postdoc Academy

Looking for opportunities to better your academic self over the summer? CIRTL, PALS, and the Postdoc Academy are now accepting registration to a variety of online course with topics including teaching, succeeding as a postdoc, and even virtual support groups!
Check them out at the links below!

[CIRTL](#) [Postdoc Success](#) [Postdoc Academy](#)

Job Opportunities, GSA Due Dates, and Postdoc Info!

Are you a new postdoc at UNL? Not sure what all you need to need, or struggling to find housing? Check out this [link](#) to Grad Studies for all that info and more! Also, UNL offers a travel grant for postdocs! Check of this [link](#) for more info!

Interested in teaching? Check out the UNL Center for Research Innovation, Teaching and Learning (CIRTL) [here](#) for workshops, seminars and certifications! CROPS also has a [link](#) on our website for more info!



COVID-19 Updates

As we continue to learn more about the COVID-19 corona virus everyday, please keep yourself informed at covid19.unl.edu! Also keep in mind that conferences and scheduled seminars are subject to change as travel enforcements are put into place to limit the spread of the virus.

For information from The Office of Graduate Studies check [HERE](#) !

Please email covid19@unl.edu if you have any questions!

Glove Recycling with Kimberly-Clark

Looking for ways to decrease your lab's environmental footprint? Kimberly-Clark is sponsoring a glove recycling program to do just that! Please visit their [website](#) for more info and to learn how your lab can be involved in reducing waste!

If you are interested in getting a glove recycling station started here at UNL, please email [Samuel Eastman](#) for more info!

Something to Share?



Like our newsletter?
Have suggestions for future segments or features?

Just want to say hey?

Contact Us!

[Website](#)

[Email](#)

[Twitter](#)

[DONATE!](#)

UNL CROPS
1901 Vine Street, Lincoln, NE 68588

[Unsubscribe](#)