

## CROPS June Newsletter

List for PSI CROPS Student/Postdoc Organization <CROPS-PSI@LISTSERV.UNL.EDU>  
on behalf of

Crops PSI Group <cropspsi@UNL.EDU>

Thu 6/11/2020 8:59 AM

To: CROPS-PSI@LISTSERV.UNL.EDU <CROPS-PSI@LISTSERV.UNL.EDU>



Collective Research Organization of Plant Scientists  
- a student and postdoc society sponsored by UNL PSI

Happy June, CROPS!

As we begin our transition back to benchwork, we have been faced with a new reality in the midst of the COVID-19 pandemic. Masks are normal, and we can only be in the lab for essential work. However things may pan out, it is more important now than ever that we stick together as a CROPS community and help each other out when we can! In the spirit of this, don't forget to join us every Tuesday through the summer for our [Summer Webinar Series!](#)

We would like to thank everyone who attended our first two webinars and helped to make it a huge success! We are so excited to be including speakers from Kansas State University, University of Missouri-Columbia, Iowa State University, and South Dakota State University. Even in these hard times, we are only a Zoom square away!

Please also keep an eye on your email for the [CROPS End of the Year Survey](#). We are asking for your input on how you felt about the events, speakers, and workshops we hosted over this past year. If you have not received the survey, please email us at [CropsPSI@unl.edu!](mailto:CropsPSI@unl.edu)

Also, we want our future newsletters to be as uplifting as possible, so we are creating a section where [YOU can submit lab job postings, personal/professional highlights, and even thesis defense announcements!](#) We want to stay as connected with each other during this unprecedented time; just because we are physically distant, does not mean we need to remain socially uninvolved in each others' lives! Email us at [CropsPSI@unl.edu](mailto:CropsPSI@unl.edu) to submit! (CROPS reserves the right to not post everything we receive as a submission)

For more information, stay tuned via [email](#), [website](#), [Twitter](#), and [Instagram!](#)  
Don't forget to check out our [upcoming events](#), [job announcements](#), and [lab highlight!](#)  
-The CROPS 2019/20 Board

## June Newsletter Contents!

-Guidelines for returning to work

- #BlackLivesMatter; Now must be different
- Greenhouse Spotlight!
- CROPS Summer Webinar Series: schedule and update
- Lab Highlight: "The Josh Herr Lab"
- Science Writing Help Desk with Dr. Christine Booth
- PSI Faculty Courses
- UNL Rec Center and Dairy Store updates: OPEN for the Summer!

### Guidelines for returning to work at UNL

If you are on campus, you **MUST** follow the health and safety measures and guidelines of being on campus. These guidelines were passed on to us by UNL and are as follows:

- Wearing a face mask covering in ALL public places, labs and shared offices
- Make sure to wash your hands thoroughly and frequently or use hand sanitizer frequently
- Maintain a 6-foot distance between people at all times.

### CROPS stands with Chancellor Green and #BlackLivesMatter "Now Must Be Different"

Recently, Chancellor Green addressed the UNL community at large expressing his call for change at UNL saying, "...Now must be different. This cannot be another moment where we collectively rage at injustice, acknowledge pain, and then take no meaningful action..." CROPS wants to ensure that we are creating an inclusive and healthy atmosphere for our community, and **will not tolerate discrimination in any form at any time.**

View Chancellor Green's full address [here](#).

### Continued thanks to our essential employees! Special Edition: Greenhouse



In each of our summer newsletters, we plan to highlight a group of the essential workers that have kept UNL running during the shutdown and continue to do so as we relax Level 4

restrictions. For June, we will be focusing on our Greenhouse Team!

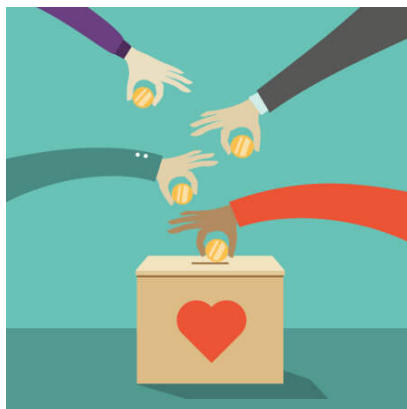
*"During the COVID-19 shutdown, we continued our work. This included spraying pesticides each week. At Beadle, it is mostly myself and Kandy Hanthorn who do the spraying. I know they continued to spray at the other locations as well. I just wanted to take the opportunity to thank my staff and all the greenhouse staff for what they do especially in the area of pest control!"*  
-Samantha Link, Beadle Greenhouse



*The University of Nebraska has faced new and unprecedented challenges over the last several months. Years of vital and irreplaceable research became the main focus of our greenhouse team. We relied heavily on the University BSM employees who worked alongside of us, without hesitation, to ensure that our critical greenhouse operations were able to accomplish our overall mission: "The Plant Growth Facilities Service Center provides high-quality greenhouse and growth chamber spaces and the professional support that meets the needs of UNL's Research, Teaching, and Extension Programs."*  
-Jeff Witkowski, East Campus Greenhouse



### Donate to CROPS!



Like what CROPS has been doing?

Want to help us put on even better events in the future?

We would love you to donate [here](#) to our UNL Foundation account to help us provide the most effective workshops and continue to bring awesome speakers to UNL!

The CROPS Board Thanks You!

## **CROPS Summer Webinar Series!**

### **Tuesday's at 11am beginning June 2nd - August 25th!**

Join CROPS weekly via Zoom on Tuesdays at 11 am for our Summer Webinar Series!

### **See the full schedule and RSVP here!**

Our summer webinar series is designed to provide our CROPS community the opportunity to present their research in light of the many scientific meetings that have been canceled due to COVID-19. We know that for many of you, having the opportunity to travel and meet others in your field is an invaluable part of your program, so we want to give you the chance to take part in our version of a conference!

#### **June 16**

**Jaspreet Sandhu**, University of Nebraska-Lincoln

“A dynamic expression network identifies OsMYB3R-3 as a regulator of early seed development in rice under high temperature”

#### **June 23**

**Dr. Guangchao Sun**, University of Nebraska-Lincoln

“Genomic, metabolic, and transcriptomic responses of the extremophile grass *P. vaginatum* to nutrient deficit stress”

**Vivek Shrestha**, University of Missouri-Columbia

“Uncovering the Genetic Architecture of Protein Bound Amino Acids in Maize Kernels using Multi-omics”

#### **June 30**

**Amanda Quattrone**, University of Nebraska-Lincoln

“Evolution of the holobiont – A phylogenetic test with 18 Nebraskan prairie grass species”

**Dr. Jian Kang**, University of Missouri-Columbia

“Differential Anti-oxidant and Sulfur Metabolism in Cotton and Maize Primary Roots in Response to Equivalent Water-Deficit Stress”

#### **July 7**

**Chenyong Miao**, University of Nebraska-Lincoln

“Increased power and accuracy of causal locus identification in time-series genome-wide association in sorghum”

**Alani Antoine-Mitchell**, University of Missouri-Columbia



“Novel vesicular trafficking component modulating Fe Sensing and plasma membrane accumulation of IRT1 in *Arabidopsis thaliana*”

**July 14**

**Jesaelen G Moraes**, University of Nebraska-Lincoln

“Impact of Drift Reducing Agents on Liquid Physical Properties and Spray Pattern Distribution of Dicamba Tank-Mixtures”

**Kelly Mason**, University of Missouri-Columbia

“Role of Clathrin-Coated Vesicle Components in Plant Immunity and Development”

Keep an eye on our [twitter](#) and email for updates!

## June Lab Highlights

**This month we are highlighting the Herr Lab!**



Here's some of the Herr lab group, along with members of the Drijber Lab in Agronomy & Horticulture at UNL, on the last day of root and soil, collecting for our Maize root microbiome field study. This was last year before COVID-19 put a halt our in-person research. We try to have a lot of fun while we tackle questions relating to host-associated microbiomes!

### **The Herr Lab**

The research in the Herr Lab is broadly focused on taxonomic and functional characterization of host-associated microorganisms. In other words, we identify "who" is on and inside a host and "what" they could be doing. While we are obviously focused mainly on studying plant hosts, we

have funded grants to study plant roots, soil crusts in extreme habitats, and the viral microbiome of human skin. What unites these seemingly unrelated projects is the methods we use.

Lab members have diverse projects, but use similar techniques to address their research questions. PhD student Ashley Stengel (co-advised by Rhae Drijber in Agronomy & Horticulture) is studying the diversity and function of bacterial and fungi associated with Maize roots under different cropping regimes and fertilizer applications. PhD student Erin Carr (co-advised with Steven Harris) is studying the interactions of microorganisms in biological soil crusts in an effort to understand how life can persist in extreme environmental conditions (think the Nebraska sandhills!). Dr. Thais Egreja, who just defended her PhD, has been studying disease resistance mechanisms of Maize in Nebraska when subjected to pathogens such as Goss's Wilt (*Clavibacter*) and leaf streak (*Xanthomonas*). Lastly, Post-doc Dr. Rachel Koch is interested in fungal-plant-insect interactions and she is a "Jill-of-all-trades" about the laboratory helping with many projects. We currently have had nine undergraduate researchers this past year who have helped graduate students with their projects and also conducted their own research projects.

In addition to our "core" lab group, we have a lot of collaborations with researchers in the University of Nebraska departments of Agronomy & Horticulture, Animal Science, Statistics, Entomology, Biochemistry, Biological Sciences, Engineering, Food Science, and Geological Sciences. We had three visiting students from other universities this last year and the Herr Lab hosted two visiting faculty on Sabbatical.

For more information visit Dr. Herr's website [here!](#)

### Scientific Writing Help Desk: "Sit-down-and-write"



**Scientific Writing Help Desk**  
Science writing done *right!*



#### Friday's from 10:00am-Noon

***Do you:***

- Need to get started writing?
- Need to finish a project and could benefit from having a dedicated time to write?

- Would like to try a process that will stop you from getting distracted by details when writing?
- Need help managing your time when writing?
- Could benefit from discussing your writing concerns with others or get new ideas?
- Would like to meet other science graduate student?

**Sit-down-and-write** is a two-hour meeting of STEM graduate students working on a variety of writing projects. The meeting is hosted by the Scientific Writing Help Desk in the Department of Agronomy and Horticulture and is led by Dr. Christine Booth. We start each meeting by catching up with each other and welcoming new members, then we transition into cycles of writing and breaks – we try to write for 25-minutes at a time, followed by a 5-minute break.

Email Dr. Christine Booth at [cbooth2@unl.edu](mailto:cbooth2@unl.edu) for more info!  
Hurry, as sessions are capped at 12 participants!

## UNL Rec Centers are OPEN for the Summer!

### Starting June 15th, Rec Centers will be open!

With limited hours and amenities, the Rec Centers will be back up and running starting June 15th. If you had registered for classes in the Spring 2020 semester, fees will be waived for the summer. If you were not registered for the spring semester but are for the summer, registration can be purchased for \$53. For more info visit the [Rec Center website!](#)

## Dairy Store is back in business!



**UNL Dairy Store**  
about a week ago



Hello everyone! We are open! However, the front door of our building (nearest to the parking spots) will remain locked due to COVID-19. We do have another door that is OPEN and it is located on the West side of the building, close to the green space on East Campus. If you need help finding the door, feel free to give us a call at 402-472-2828 and we will help you out! Thanks!

Have you been CRAVING Dairy Store ice cream during the shutdown??

Well they are back! But check out their post (left) for their COVID-19 updates.

For more info, visit their website [here!](#)

## Fall 2020 PSI Faculty Courses

CROPS would like to offer our PSI faculty a space to advertise their Fall 2020 classes to our community! We will keep this list here throughout the summer and continue to update it as we receive more submissions! Each course will be linked to a PDF on our [website!](#)

**Jeff Mower: BIOS 429/829 [Phylogenetic Biology \(ACE 10\)](#)**

## Summer Online Courses with CIRTL and the Postdoc Academy

Looking for opportunities to better your academic self over the summer? CIRTL, PALS, and the Postdoc Academy are now accepting registration to a variety of online courses with topics including teaching, succeeding as a postdoc, and even virtual support groups! Check them out at the links below!

[CIRTL](#) [Postdoc Success](#) [Postdoc Academy](#)

## Job Opportunities, GSA Due Dates, and Postdoc Info!

Are you a new postdoc at UNL? Not sure what all you need to need, or struggling to find housing? Check out this [link](#) to Grad Studies for all that info and more! Also, UNL offers a travel grant for postdocs! Check of this [link](#) for more info!



Interested in teaching? Check out the UNL Center for Research Innovation, Teaching and Learning (CIRTL) [here](#) for workshops, seminars and certifications! CROPS also has a [link](#) on our website for more info!

## COVID-19 Updates

As we continue to learn more about the COVID-19 corona virus everyday, please keep yourself informed at [covid19.unl.edu](https://covid19.unl.edu)! Also keep in mind that conferences and scheduled seminars are subject to change as travel enforcements are put into place to limit the spread of the virus.

For information from The Office of Graduate Studies check [HERE](#) !

Please email [covid19@unl.edu](mailto:covid19@unl.edu) if you have any questions!

## Glove Recycling with Kimberly-Clark

Looking for ways to decrease your lab's environmental footprint? Kimberly-Clark is sponsoring a glove recycling program to do just that! Please visit their [website](#) for more info and to learn how your lab can be involved in reducing waste!

If you are interested in getting a glove recycling station started here at UNL, please email [Samuel Eastman](mailto:Samuel Eastman) for more info!

## Something to Share?





Like our newsletter?

Website

Email

Twitter

DONATE!

UNL CROPS  
1901 Vine Street, Lincoln, NE 68588

[Unsubscribe](#)

|