

## CROPS March Newsletter

List for PSI CROPS Student/Postdoc Organization <CROPS-PSI@LISTSERV.UNL.EDU>

on behalf of

Crops PSI Group <cropspsi@UNL.EDU>

Thu 3/12/2020 1:20 PM

To: CROPS-PSI@LISTSERV.UNL.EDU <CROPS-PSI@LISTSERV.UNL.EDU>



### From the Collective Research Organization of Plant Scientists (CROPS) of PSI:

It is hard to believe that we are almost at Spring Break and the semester is flying by! So far, we have had Dr. Nancy Hofmann host a writing workshop that was a huge success, but we are not stopping there! We have two more webinars lined up for Spring 2020 and another social event on **March 26th at 5:30pm at The Mill on Innovation Campus** to come and meet the CROPS board and your fellow UNL plant scientists. As always, we are so grateful to the CROPS community for supporting our events and for the feedback that helps us move forward!

If there is anything you would like to see CROPS sponsor or anyone you would like to us invite to UNL, email us at [CropsPSI@unl.edu](mailto:CropsPSI@unl.edu) !

For more information, stay tuned via [email](#), [website](#), [Twitter](#), and [Instagram](#)!

Don't forget check to out our **upcoming events**, **job announcements**, and **lab highlight!**  
-The CROPS 2019/20 Board

### Keeping Up to Date with CROPS !

We want to ensure that our CROPS community feels adequately informed and involved with our events, speakers and workshops. Just a reminder that our monthly notes can be found [here](#), posted for all to see on our [website](#). Also we love hearing from our members, please don't hesitate to reach out to us with questions, comments, or concerns!

**Writing Workshop with Dr. Nancy Hofmann**  
**Sponsored by the Nebraska Center for Biotechnology**



This past month, we had an amazing workshop on academic writing from Dr. Nancy Hofmann, Science Editor for *The Plant Cell* and co-founder/managing editor of *Plant Editors*. Nancy talked with us about her career path from bench scientist to working for *The Plant Cell*, and now running her own business. She also gave us a peek into the world of what happens after we submit to a journal, and countless tips and tricks to improve our writing and likelihood of being published! Keep an eye out on our website for the uploaded video of her talk!

Also, congrats to Bianca Andrade (bottom left) and Ananya Mukherjee (bottom right) on winning a CROPS T-shirt from our raffle at the last social! We had a great time at a Code Brewery, and even got to play some musical bingo!

## CROPS 2020 Travel Grant Awardees!

Congratulations to the following graduate students and postdocs who have been awarded the CROPS 2020 Travel Grant! And special thanks to our judges Drs. David Holding, Sabrina Russo, and Jinliang Yang!

Nikita Gambhir - Graduate Student  
Ariadna Gonzalez-Solis - Graduate Student  
Leandra Parsons - Graduate Student  
Amanda Quattrone - Graduate Student  
Gen Xu - Postdoctoral Scholar  
Mackenzie Zwiener - Graduate Student

The judges told us this year the competition was fierce, but in the end had to narrow it down to these six fantastic scientists! We would like to thank everyone that applied and if you were not selected this year or didn't get to submit, we encourage you to apply for Fall 2020 Spring 2021 Travel Grant! We are also looking for sponsors and judges for next year, so if you would like to be involved, email [CropsPSI@unl.edu](mailto:CropsPSI@unl.edu) for more info!

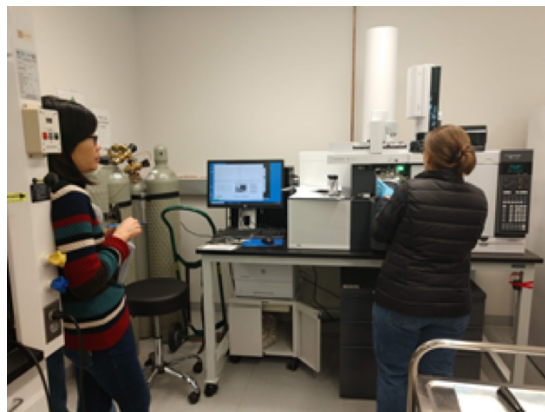
## February Lab Highlights

This month we are highlighting Dr. Toshihiro Obata !

### Dr. Toshihiro Obata

The Obata lab studies all about plant primary metabolism. We employ GC-MS based metabolomics approaches to gain the overview in metabolic status in various plant material. One of our major research goals is to elucidate the functions of primary metabolism in plant resilience to abiotic stress conditions. **Here**, we have recently we have analyzed the metabolic responses in developing rice grains to high night temperature (HNT) and found that sugar metabolism and shikimate pathway likely play a role in the response to HNT in collaboration with Walia and Zhang labs. We are now trying to combine metabolomics and quantitative genetics approaches to identify genes regulating primary metabolism and contributing to plant resilience to abiotic stresses. To this end, we are currently analyzing hundreds of samples from the population panels of maize (seedlings and kernels with Yang lab; roots with Schnable lab) and rice (seedlings and grains with Walia lab). As you may noticed, our research highly relies on collaborations. If you are interested in analyzing primary metabolism, feel free to contact us!

You can see more information in our recently launched website <https://obatalab.unl.edu/>.



## Upcoming Events!

### **CROPS Webinar!**

**March 31st 1:00-2:00pm, E228 Beadle Center**

Dr Pamela C. Ronald is a plant pathologist and geneticist. Dr Ronald is a Distinguished Professor at the Department of Plant Pathology and is founding director of Institute for Food and Agricultural Literacy (IFAL), at the University of California, Davis. Research at the Ronald lab is focused on discovering genes that improve disease resistance and stress tolerance. In 2015, the outcomes from her work on submergence tolerance in rice reached over 4.9 million farmers. RSVP [here](#) for more info! Note: as this is a webinar, coming to the meeting room is optional, the Zoom link can be found [here](#)!!

### **Plant Science Symposium**

**March 17th 8:00am-5:00pm, Innovation Campus Conference Center**

The Nebraska Plant Science Symposium is a part of a biennial series which began in 2012. In 2015, the Symposium became an annual event. It is affiliated with the [Plant Sciences Symposia Series](#) spanning multiple universities, facilitated by Corteva Agrisciences.

The goal of the symposium series at the University of Nebraska–Lincoln is to enhance agricultural scientific literacy, stimulate collaboration, and help build interest in plant breeding careers. This one-day symposium is free, open to the public, and offered via webinar to the broader scientific community around the world.

For more info, visit the website [here](#)!

### **CROPS Social Event**

**March 26th 5:30pm, The Mill Coffee Shop - Innovation Campus**

Come and join the CROPS Board in celebrating our Travel Grant awardees, and enjoy some coffee, tea or even something a bit stronger. We look forward to seeing you all there!

### **PSI Research Group Meeting**

**March 19th 4:30pm, E103 Beadle Center**

Work-in-progress talks from the labs of Dr. Schnable and Dr. Zhang will be given; food and refreshments will follow in the Beadle Center Atrium

### **Agronomy and Horticulture Seminar**

**March 13th 3:30pm, 150 Keim Hall**

"Metabolic engineering of lignin for advancing agricultural sustainability and the new bioeconomy" by Dr. Richard Dixon

### **Biotechnology / Life Sciences Seminars**

**4:00pm, E103 Beadle Center**

**March 18th**

"Sex and mitonuclear adaptation in experimental *C. elegans* populations"  
by Dr. Suzanne Estes, Portland State University

**April 8th**

Dr. Devaki Bhaya, Carnegie Institution for Science

### **CROPS Career Panels**

**Oct 17th and 22nd 2019**

*Questions, answers and tips for a successful career*

As part of the PSI-Symposium and the Agricultural Research Division meeting students and post-docs had the great opportunity to meet with professionals in a wide variety of career areas

to discuss and learn about what it takes to prepare for a specific career and what it takes to be successful in general. The panelist were at the PSI- Symposium: Aaron Hummel (Pairwise Plants), Erich Grotewald (MSU), Jessie Alt (Corteva), Katie Dehesh (UC Riverside). At the ARD meeting Donna Jo Denison (Cassidy and Associates) George Burba (LI-COR), Stewart Bauck (Neogen Corporation), Edward Cargill (Bayer Crop Science), Shane Farritor (Professor of Mechanical Engineering at UNL).

Were you at the panel and had questions that didn't get asked? Or were you unable to attend? Visit our [website](#) for transcripts of the panel and it will be just like you were there!

## Job Opportunities, GSA Due Dates, and Postdoc Info!

Are you a new postdoc at UNL? Not sure what all you need to need, or struggling to find housing? Check out this [link](#) to Grad Studies for all that info and more! Also, UNL offers a travel grant for postdocs! Check of this [link](#) for more info!



Interested in teaching? Check out the UNL Center for Research Innovation, Teaching and Learning (CIRTL) [here](#) for workshops, seminars and certifications! CROPS also has a [link](#) on our website for more info!

## COVID-19 Updates

As we continue to learn more about the COVID-19 corona virus everyday, please keep yourself informed at [covid19.unl.edu](https://covid19.unl.edu)! Also keep in mind that conferences and scheduled seminars are subject to change as travel enforcements are put into place to limit the spread of the virus.

Please email [covid19@unl.edu](mailto:covid19@unl.edu) if you have any questions!

## Glove Recycling with Kimberly-Clark

Looking for ways to decrease your lab's environmental footprint? Kimberly-Clark is sponsoring a glove recycling program to do just that! Please visit their [website](#) for more info and to learn how your lab can be involved in reducing waste!

If you are interested in getting a glove recycling station started here at UNL, please email [Samuel Eastman](#) for more info!

## Something to Share?

Like our newsletter?



Have suggestions for future segments or features?

Just want to say hey?

**Contact Us!**

Website

Email

Twitter

DONATE!

UNL CROPS  
1901 Vine Street, Lincoln, NE 68588

[Unsubscribe](#)